



Fig. 1 - J12 Junction Box



Fig. 2 - J24 Junction Box



Fig. 3 - J24E Junction Box

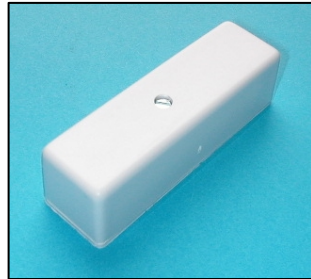


Fig. 4 - J40 Junction Box



Fig. 5 - J60 Junction Box



Fig. 6 - J80 Junction Box

<u>Model</u>	J12	J24	J40	J60
Grade 2 Class II	●	●	●	●
<u>Material</u>				
HIPS	●	●	●	-
Mineral Polyprop	-	-	-	●
Tamper Leaf	●	●	●	
Connections	12	24	7	6
Knock Outs Side				
Knock Outs End	2	4	2	2
Back Holes	2	6	2	-

<u>Dimensions:</u>				
Length	78	125	78	70
Width	78	100	24	22
Height	22	48	22	23

<u>Model</u>	J80	J24E
Grade 2 Class II	●	-
<u>Material</u>		
HIPS	●	●
Tamper Leaf	●	-
Connections	10	-
Knock Outs Side	-	-
Knock Outs End	8	4
Back Holes	4	6

<u>Dimensions:</u>		
Length	70	125
Width	56	100
Height	20	48

Description:
Grade 2
Junction Boxes

Materials:
Box - HIPS
Cover - HIPS
Mineral Filled Polyprop (J60)

Temperature Range:
-40°C - +50°C

Tampers:
Stainless Steel

Maximum Current
3A Max AC

Rated Voltage:
0-125v DC
230v AC

Colours:
White
Brown (Suffix B)

Variations:
Reed (Suffix R)
Empty (Suffix E)

Fittings:
Wire Clamping Terminals

KNIGHT
FIRE & SECURITY PRODUCTS LTD
email: info@knightplastics.com

Unit 84 Seawall Road Ind. Estate
Cardiff UK CF24 5TH
Tel: 0 (00 44) 29 20 48 81 29
Fax: 0 (00 44) 29 20 48 91 32

Drawing No: **J12-J80**
Junction Boxes
Chris Moorman
Date: 11/02/08

All units in mm
Do not scale



© Knight Fire & Security Products Ltd
All cases of ™ Infringement will be pursued.