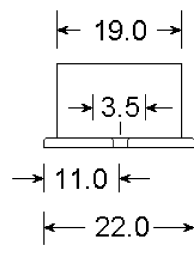
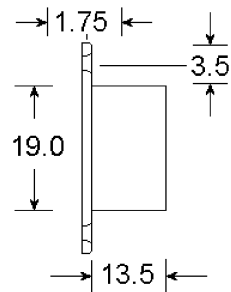
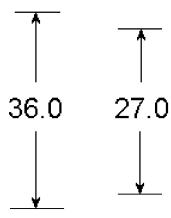
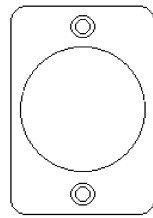
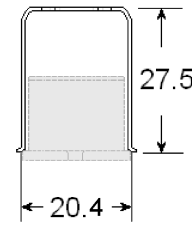


Contact Cover



Magnet

**Description:**

Grade 2 Class II  
4 Terminal Flush Tampered Quickfit  
Contact With Rectangular Plate.

**Operating Gap:**

0-15mm (Approx)

**Material:**

ABS

**Tamper:**

Microswitch

**Magnet:**

Ferrite or Alnico V

**Contact Material:**

Rhodium

**Switching Current**

Reed rated @ 200vDC 50mA.

Tamper Switch rated @ 30vDC 50mA

**Temperature Range:**

-40°C to +50°C

**Colours:**

White (No Suffix)

Brown (Suffix B)

Fixing Screws Provided

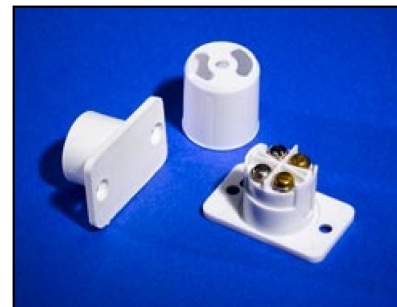
**Installation:**

Connect the REED wires to the NICKEL terminals.

Connect the TAMPER wires to the BRASS terminals.

The operating distance for non magnetic materials is approx. 0-15mm.

*Note: Mounting on metal surfaces reduces the functionality, according to the metal type and thickness.*



**KNIGHT**

FIRE & SECURITY PRODUCTS LTD

<mailto:info@knightfireandsecurity.com>

Unit 84 Seawall Road Ind. Estate  
Cardiff UK CF24 5TH

Tel: 0 (00 44) 29 20 48 81 29

Fax: 0 (00 44) 29 20 48 91 32

Drawing No: **A45**

Drawn: *Chris Moorman*

Date: *21/06/10*

All dimensions in mm  
Do not scale



© [Knight Fire & Security Products Ltd](http://knightfireandsecurity.com)

All cases of™ Infringement will be pursued.